

TouchSmart Controllers for your TrojanUV3000Plus

Your System Control Center (SCC) is a core component of your UV system, allowing you to monitor and control UV functions. Our TouchSmart™ line of controllers have been designed by Trojan engineers to offer an affordable solution that works seamlessly with your TrojanUV3000Plus® system.

Upgrading your Existing System Control Centre:

Upgrading core components of your UV system is a great way to take advantage of the latest technologies and features, while scheduling installation at your preferred timing and as your budget allows.



TROJAN UV3000PLUS[®]

Tiered Offering to Meet Your Needs

With two tiers of functionality - our standard TouchSmart and the TouchSmart Plus – you choose the option that best meets the needs of your facility and budget.

Latest Technology and Parts

UV parts — particularly electronics — in your UV system have evolved quickly over the past decade and many original components may be phased out and no longer available. Reduce the potential for unplanned downtime and meet treatment compliance with newer parts that are available now and into the future.

Full Suite of Features

Upgrade your existing SCC with a TouchSmart controller to benefit from its full suite of features that come at an affordable price. Outdoor rated (if required) screens have better visibility and less glare in bright environments and have improved longevity. Screen graphics and layouts have been enhanced, allowing you to easily navigate all the available functionality for monitoring, diagnosis and adjustment of UV system operation.

Connected Service with Stream

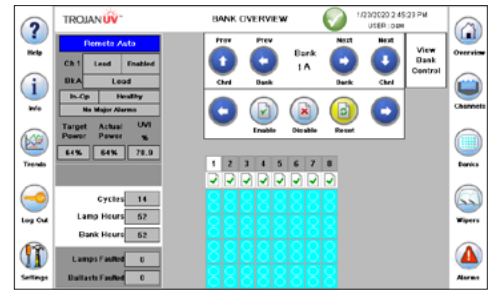
TouchSmart controllers come enabled with Stream™, our digital network and toolbox that gives you access to the right information and support when and where you need it. The Stream App is your personal view into your UV system; See system status, receive instant alarm notifications and access guided troubleshooting resources. Stream Connection is a support tool that provides our Technical Assistance Center with instant access to your UV system to quickly diagnose and resolve UV issues.

TouchSmart

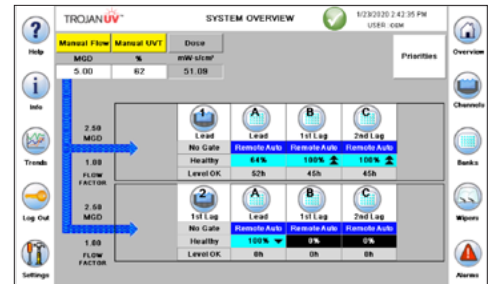
Our standard TouchSmart controller has a full suite of features including:

- 7" color touch screen interface with modern icons for intuitive operation
- SCADA connectivity
- Dose-pacing control
- High and low water level alarms (if probes installed)
- Inputs and outputs for flow & UV Transmission signals
- Data logging for trending and analysis (flow, power, UVT, UV intensity and dose)

TOUCHSMART™ CONTROLLER



The Bank Overview screen provides a detailed view of bank and lamp status.



The Home Screen provides an overview of system status.

TouchSmart Plus

Benefit from the features of the standard TouchSmart controller but with additional capabilities such as:

- Ability to add custom functionality including the addition of input/outputs gate control or instrumentation
- View individual lamp hour tracking, lamp-out factor, and customized alarm groups
- Larger 12" touch screen interface with outdoor ratings for better visibility and resistance to sun damage

TOUCHSMART™ Plus CONTROLLER



The Home screen provides an at-a-glance view of overall system status.



The Bank Overview screen shows you the status of each bank of lamps.

Start Planning

We're here to help. If you have questions or are ready to start planning your TouchSmart upgrade, simply call us at **1-800-291-0851**, visit trojantechnologies.com, or contact your local sales and service representative.

Controller Capabilities

Feature	TouchSmart	TouchSmart Plus
Size		
Maximum Number of Channels	2 / 4*	4**
Maximum Modules/Bank	32	32
Maximum Banks/Channel	3 / 1	3
Weir Gate Control/Monitor	Monitor***	Control
Inlet Slide Gate Control/Monitor	Scada Monitor	Control
UPS Available	✓	✓
Heater Available	✓	✓
Controls		
Color Touch Screen Interface	✓	✓
Dose Pacing	✓	✓
Individual Lamp Status	✓	✓
Lead Bank Rotation	✓	✓
Auto Replace Faulted Bank	✓	✓
Multiple Lamp Failure	✓	✓
Module Failure Alarm	✓	✓
Bank Communication Failure Alarm	✓	✓
Water Level (Analog)	✓	✓
High Water Level Available (Discrete)	✓	✓
Flow Input	✓	✓
UVT Input	✓	✓
Individual Lamp Hour Tracking		✓
Maintenance Mode		✓
Lamp Out Factor		✓
Remote System On/Off	✓	
Remote Channel On/Off	SCADA	
Data Logging	✓ USB	✓ USB
Remote Monitoring		
SCADA Available	✓	✓
Bank Status	✓	✓
Critical Alarm	✓	✓
Major/Minor Alarm	✓	✓
Low Flow Alarm	✓	✓
Low UV Intensity Alarm	✓	✓
Bank UV Intensity Alarm	✓	✓
Compatibility of TouchSmart controllers may be dependent on your TrojanUV3000Plus model. Please confirm compatibility with a Trojan representative.		

* 1,2 channels up to 3 banks per channel; 3,4 channels 1 bank only per channel

** Can be customized to any number for project requirements

*** 1 or 2 channels only

To learn more about the brands and affiliates of Trojan Technologies, please visit www.trojantechnologies.com



© 2023 Trojan Technologies Group ULC. No part of this publication may be reproduced, stored in a retrieval system, or transmitted in any form or by any means without the written permission of Trojan Technologies Group ULC. The products described in this publication may be protected by one or more patents in the United States of America, Canada and/or other countries. (0223)